

bjorn

INSTALLATION INSTRUCTION
BJOORN PARQUET PARALLEL ROWS

Locking system 5G

Index

Introduction – page 3

Product information

If craftsmen/installer is required

Important

Tools

Before installation – page 5

Policy surface appearance

Room designs, floor size etc.

Expansion gap to vertical construction parts

Preparations

Subfloor, the load-bearing construction

Underlay material

Floor heating

Room climate

Ventilation

During installation – page 7

A- and B-strips

Calculation the number of full size strips, first row

Installation method

Dismantling of an installed strip

When angling is not possible

Installation around heating pipes

After installation – page 12

Surface treatment

Skirting

Maintenance

Quality policy

Other

Introduction

Product information

- A European parquet strip with a core of high-end plywood approx. 2.7 mm wear layer, pre sanded to 120 grains. Strips A & B.
- Strip size L = 340 mm, W = 68 mm, T = 12 mm.
- 1 box contains 24 strips = 0,554 m².
- Sortings: Select, Rustic and Antique.
- Surface finish: Untreated, pre oiled or lacquered. Untreated strips require ordinary surface treatment. Pre oiled strips require a supplementary, second oil surface treatment after installation. Please ask Bjoorn Flooring for further information.
- Typically, A-strip to be used for installation of parallel rows. This installation instruction is based on A-strips. (B-strips works as well, but then reversed installation direction, i.e. begin in the right corner of the room.
- Bjoorn Parquet strips can only be installed in dry areas.

If craftsmen is desired

Please contact Bjoorn Flooring to assist for floor installers and surface treatment. We cooperate with authorized Bjoorn installers and offer different kind of installation support.

Important

- When purchasing this flooring always add approx. 5% margin/overflow for processing and materials customization.
- Read through the entire installation instructions carefully before you begin to install the floor.
- Keep all flooring packages unopened at least 48 hours at room temperature before work starts.
- Stacking packages "airy". Then successively open the packages as the floor is laid. The room temperature must be at least 18 °C before and during the installation, the relative air humidity in the room should be 30-60%.

Tools

- Important to be careful so as not to grease, stains and dirt get stuck on the strips during the installation.
- Protective paper, without a polymer layer, successively placed over the floor surface during the installation, protecting the floor prior to surface treating.
- Use clean shoes, with a bright sole.
- Spacers; see table for gap distance.
- Sliding mitre saw or jig saw.
- Rubber club (white head).
- Fine pencil (0,5 mm), ruler, set square 45 & 90 degr.
- White glue (D3) for adjustment at radiator pipes.
- Bjoorn hand block.
- Ordinary pull bar, hammer.
- Bjoorn dismantling tool.



Bjoorn hand block.



Bjoorn dismantling tool.



Rubber club.

Before installation

Policy surface appearance

If any questions may be about quality, sorting, or defects, it is important to complain before you install the floor. When a floor strip is installed by yourself or a professional installer, you as a buyer is considered to have approved the product. An installed strip is an approved product.

Room designs, floor size etc.

In all areas, domestic and commercial areas for example offices, shops, expos etc, normal furnished symmetric floor areas/rooms bigger than 10 x 10 m (maximum 100 m²), between adjacent rooms, transitions to corridors you always must install expansion joints to avoid joint openings.

In for example kitchens all permanent pieces of furniture and such as cupboards and kitchen islands must be installed on the carrying subfloor and not on the parquet floor.

This is made by separating the floor into sections depending on installation patterns and main direction. By harmonization of heavier furnishing as for example counters, kitchen islands, bookcases, safes etc. the floor must be separated into smaller sections by expansion profiles, as heavy furnishing on a floor forms fix points (i.e. the floor area will not be allowed to move according to current room climate).

Expansion gap to vertical construction parts *Recommended gap distance – table		
Longest distance (m)	Gap (mm)	Skirting thickness (mm)
<4 m	6	12
4-7 m	10	16
>7-10 m	15	22

Preparations

- Remove the old skirting boards. The floor should be floating installed, i.e. the strips should not be glued or nailed down to the construction sub floor or installed against solid structures/objects.
- Leave an expansion gap between the floor and all fixed structural elements such as walls, thresholds, pillars or pipes in the room. *See table above gap distance**.
- Measure out the room and decide the strips length orientation: usually longitudinally or in main light direction.
- Calculate the number of rows required. The minimum width of a cut strip is 35 mm, you might need a width adjustment of both the first and last row.

Subfloor, the load-bearing construction

Bjoorn Parquet Strip can be installed on almost any type of subfloor such as wooden floors, PVC or cement concrete floors. Wall-to-wall carpets, for example needle felt carpets needs to be removed.

Ensure that the subfloor is leveled, flat (± 1 mm over 2 m), dry and clean

- Subfloor of wood up to 50% RH or about 8-10% moisture content at 20 °C.
- Subfloors of concrete and concrete slab on ground max 90% RH at 20°C.

NOTE! Age resistant PE film, 0,20 mm, is required.

RH-Moisture tests according to the borehole method (www.rbk.nu).

Elevated areas such as wood or concrete edges, tops must be sanded down or evened up.

Screw loose areas that squeaks and replace damaged parties that is loose or damaged by humidity.

Underlay material

Install an underlay material as a noise reduction/aliasing, it shall be slightly compressible and with a maximum thickness of 2 mm. Foam (density ≥ 30 kg/m³) is a recommended underlay material. Floor paper is not recommended.

All types of concrete sub floor and ceramics also require moisture protection, even if damp insulation is in the floor construction. Moisture insulation (vapor barrier) shall be at least 0.20 mm thick, age resistant PE-film (LDPE). The film/foil should be at least 20 cm overlap between the joints, taped, folded up against the walls and will be cut after floor skirtings are installed.

Floor heating

Bjoorn Parquet can only be installed on temperature regulated, water based or electricity floor heating systems, if they are included (built into) the sub floor construction. A floor sensor must always be installed to prevent the surface temperature from exceeding 27 °C.

Floor heating water based systems with the pipes positioned in profiled particle floorboards with heat distributing aluminium sheets must be covered with a loadbearing profiled (i.e. tongue/groove) sheet of particleboard or HDF, in at least 8 mm thickness.

For other floor heating systems please see the GBR-information below.

Signed installation and protocol of heating of the subfloor with floor heating system is recommended.

At all floor heating systems, a vapor barrier (a PE-foil 0,2 mm) must be placed between floor heating system and the underlay material at any type of subfloor. All underfloor heating must be turned off during installation and the floor's temperature must be between 15 °C and 25 °C.

Occurring non heated floor areas within the floor area must be separated with expansion joints (profiles).

Maximum permissible heat output is approx. 75 W/m². Maximum allowed surface temperature on the floor is 27 °C. This is true even under carpets and other overlays (i.e cup boards) that can act as thermal insulation and increase the floor temperature over the allowed maximum surface temperature.

Temperature control after installation or if the heating system has been switched off for a longer period of time:

- The first week should have low temperature heating system 16-20 °C.
- The second week, the heating system must be adjusted as described above.

GBR-information

Further information about floor heating in buildings please go to <https://www.golvbranschen.se/publikationer/branschregler-och-standarder>, file: Wooden floors over underfloor heating 1-2005.

Room climate

Ambient climate for wood floors should be 30-60% relative humidity (RH) at 20 °C. At low RH, fine cracks can occur in the joints between the strips, which are best remedied by an indoor air conditioner for temperature and vapor, especially during winter time.

Ventilation

If out-and-in air conditioning system is installed in the property, during winter time moisture must be added to the in-air to ensure the indoor climate/moisture requirement.

During installation

A-and B-strips

Usually A-strips to be used for installation of parallel rows. B-strips can be used but are mainly used at other installation patterns. A-or B-type is marked on the back of the strip profile. This instruction is based on A-strips. (B-strips: Work equally well when installing in parallel rows, but start in the right corner of the room).



How to identify?

Place both strips with decorative surface upwards and the long side locking profile facing you. The A-strip is characterized by the short side locking profile is to the right and for the B-strip to the left. The short end tongue sides has an inserted flexible locking tongue.

Calculation the number of full size strips, first row

Measure the distance (W) between the side walls. Select gap distance from the wall as shown in the table on page 5. The strips length is 340 mm, number of whole rods = $(W - 2 \times 10) / 340$ pcs, with gap

distance= 10 mm. Check that the last strip in row is at least 68 mm (= strip width) long. You may need to precut the first strip in the row.

Measure the depth of the room, and also make sure the last row of floorstrips is not less than 34 mm wide. See below section "*Adjusting the first row*".

Installation method

Installation principles for Strip long sides. Respectively Strip short end.

1. **Short ends:** Place the short end of a strip with the flexible tongue close to the former strip with its locking strip (groove) and fold down to the floor. Tap slightly with a rubber club at the black point ●.
2. **Long sides:** The long sides can only be angled in and down in the previous long sides.

Animation 5G: www.youtube.com/watch?v=WK6s3XzXBgY&list=PLYb6ToFReLLZv-3W3L-cWs2vwrMU-JaNt&index=4

Installation

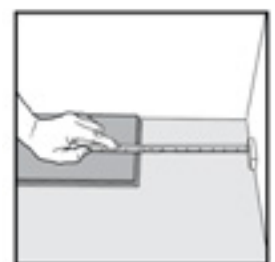
Please see the figures/sections on page 9.

Introduction

Check that the starting wall in front of you is straight with a straight edge or string. Check also that it is 90 ° to the floor's center line from the starting wall. If this is not the case, the first row has to be adjusted, which is best done after three installed rows. See below section "*Adjusting the first row*".

Get started

First remove the tongue on the strips lying against the starting wall. Remove the black tongue to the left of a full size strip and place a spacer. Install the strips in the first row from left to right according to 1. above. Also place a spacer at the end of the row. Check that the strips are aligned, no unevenness may be felt when a finger is moved over the edge joins along the entire line.

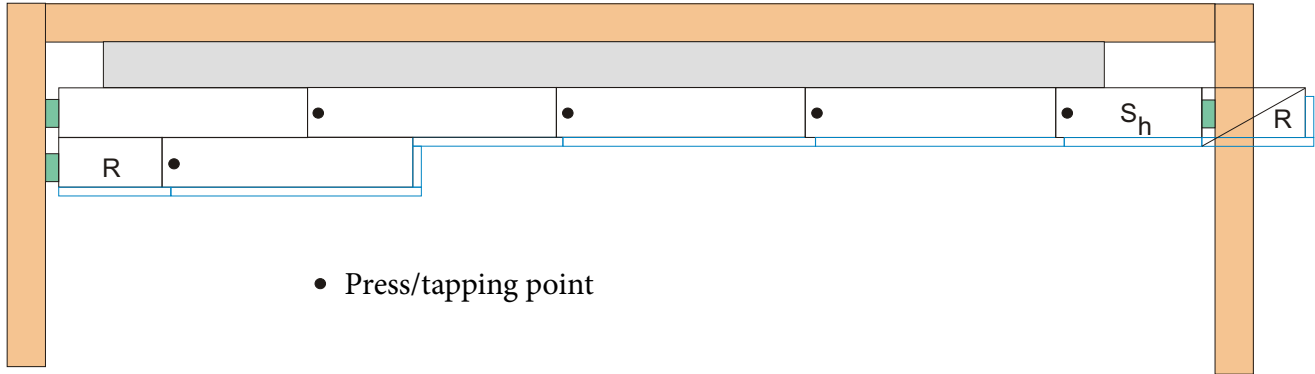


The second row starts with waist part R from the first row. R's length is adjusted so that the last strip in this line is a minimum of 68 mm. Measuring; Note the right spacer in the figure.

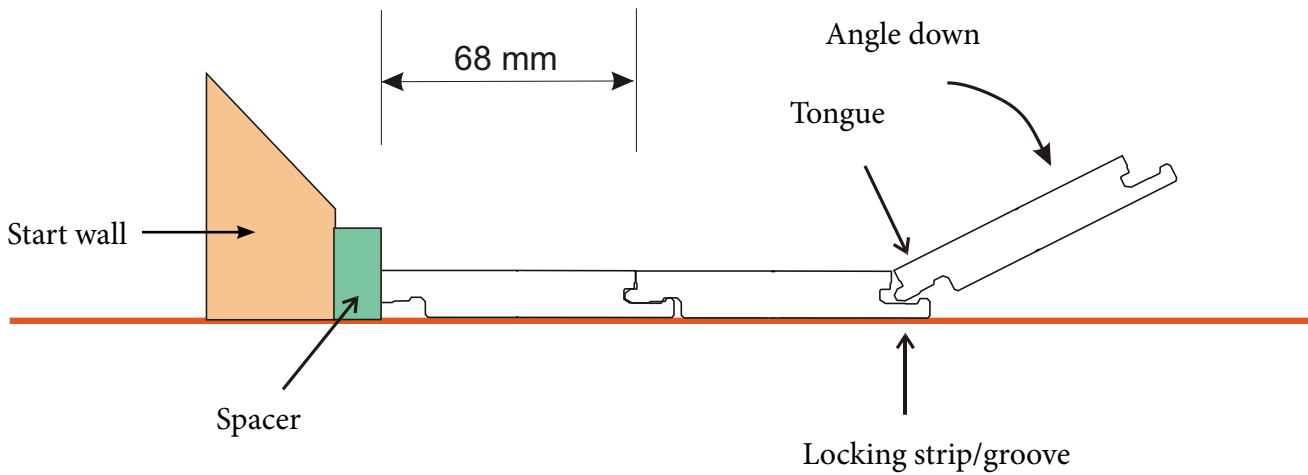
The second strip in the second row is now positioned end to end to the R-piece from the first row and the folded down into the long side groove of the previous row according to 2. above. Press a little extra here or tap with the white rubber hammer so that the short side is installed down properly. Install in the same way three rows.

Push the floor against the wall. It is important that the spacer blocks or wedges (2 pieces wedged against each other so that the correct wall distance is obtained) remain throughout the plant - even those on the left and right side wall.

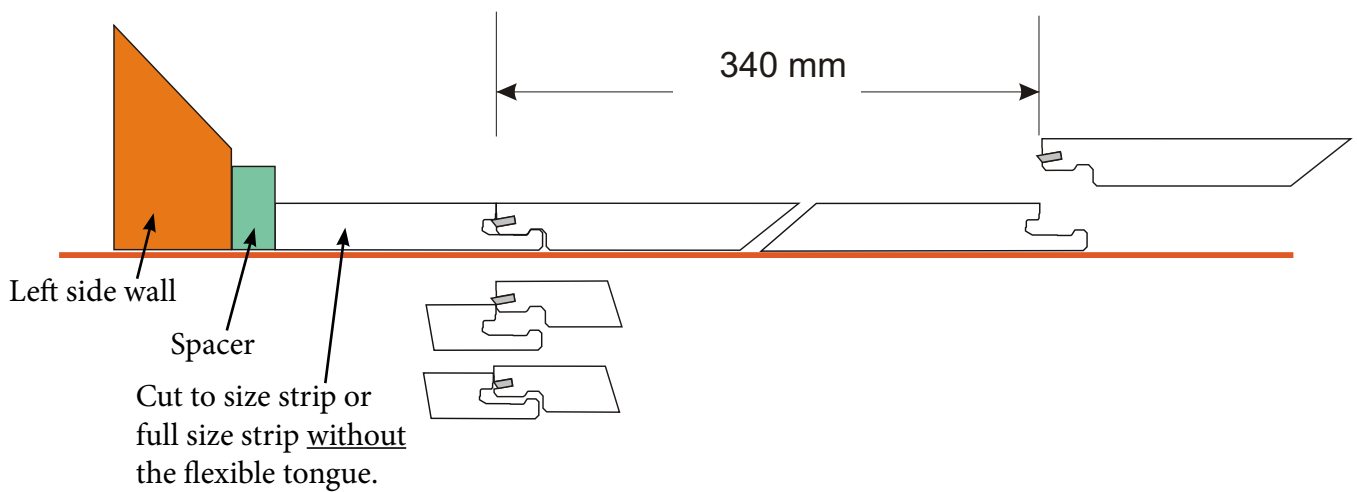
Figures



Long sides connection



Short sides connection



Adjustment of the first row

Pull out the three rows a bit from the wall, adjust the rows to correct position following the center line and so that as less material as possible is removed. Make a simple drawing tool (piece of wood with the pencil) as shown in figure and draw the line.

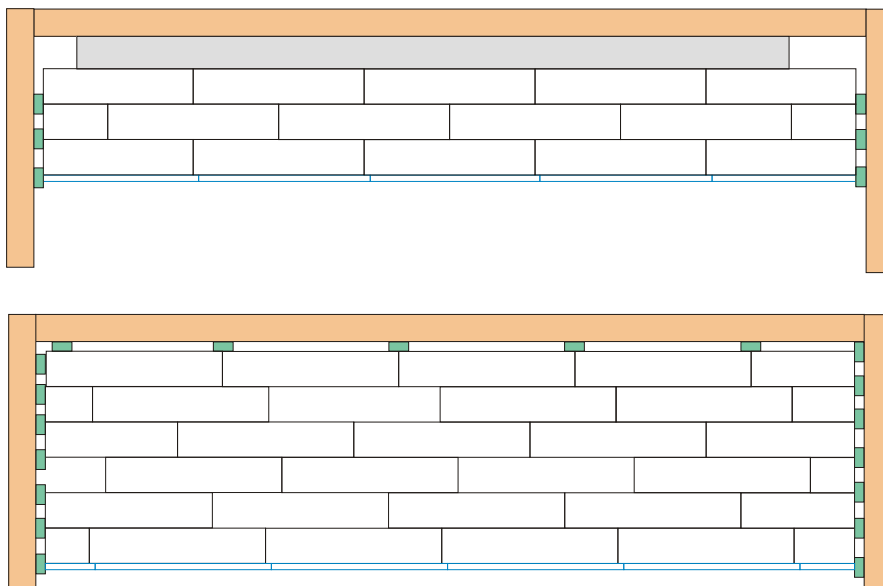


Cut and reinstall. Place the spacers at each joint and push the rows against the wall. How to remove strips is shown below.

Installation patterns – Parallel rows

The strips can be installed symmetric, i.e. the short end joints are aligned in every second row as shown below, alternatively non symmetric, where the first strip in each row has different lengths.

NOTE! A row's first and last strip must at least have the length of 68 mm.



Dismantling of an installed strip

An entire row is taken up by lifting it up a few inches from the surface of the floor and then turned a tied hand in the row above. Tilt up, put down and separate the strips one by one from right to left.

Reverse order may damage the locking system!

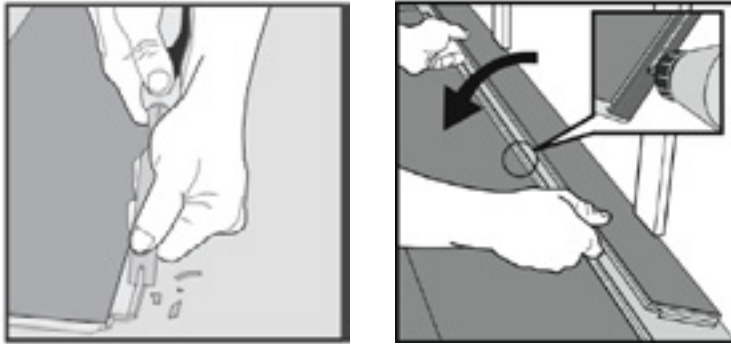
Strips can also be removed by using a special tool (see page 4).

Hold the tool handle vertical. Press the steel rod to the left in the groove. The flexible tongue is pressed back into its groove and allow disassembling. As the steel rod is pressed in 68 mm (strip width): Release your hand from the tool and gently angle the right strip by grabbing it in the middle and lift up.

Instruction video: <https://www.youtube.com/watch?v=-yle1s0TWtM>

When angling is not possible.

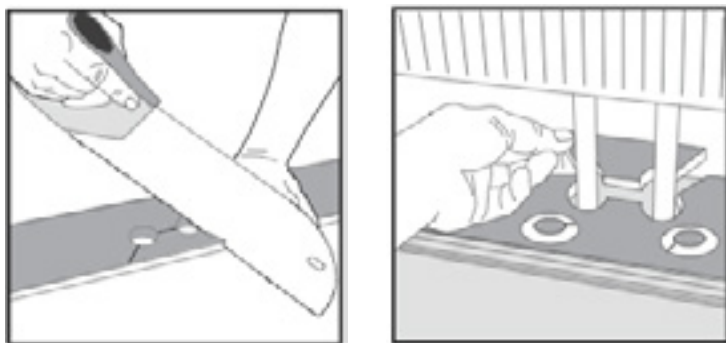
Remove “the locking element /hook” according to picture. Place white glue in the groove and install next strip horizontally. Press- place distance wedges between the glued strip and the wall.



Installation around heating pipes

Mark the center point of the tubes on the strip. Drill holes 20 mm bigger than the tube diameter (if gap distance is chosen to be 10 mm).

Cut according to the figure. Put white glue and replace the floor pieces. Cover the holes with pipe collars or fill with a joint backer rod of foam before placing the sealant (=joint sealer type SMP/MS - silicone free and paintable).



After installation

Surface treatment

Untreated and pre oiled surface finishes of the floor must be treated as soon as possible after installation according to product instructions.

A pre oiled floor must be oiled after installation and then regular be maintenance oiled.

Contact Bjoorn for recommendations of oil treatment products.

Skirtings

After finalized surface finish treatments install the skirting along the walls.

Please note that the skirting is neither allowed to be fixed in the floor nor pressed down to it.

Maintenance

Maintain the floor according to instructions for your choice of surface treatment.

Protective felt pads is recommended under furniture legs and protective carpets under caster chairs with hard wheels. Always use protective entrance carpets.

Quality policy

Joint openings

Joint openings (i.e. the distance between two strips/planks) may be maximum 0,25 mm at floor installations with flooring products made with core material of plywood or HDF. Within the warranty period maximum five (5), 0,75 mm wide joint openings are permitted per each 10 m² floor area.

Height difference

The height difference (between two close to each other installed strips/planks) may maximum be 0,20 mm. Maximum five (5) separate height differences up to 0,30 mm is permitted within a floor area of 10m². At bigger areas the number of permitted height differences is proportional to the actual floor area.

Room climate

If given limits, for indoor climate parameters as temperature and relative humidity in the air (RH) at the floor level, is exceeded or falls short of, remarks on evenness, joint openings or strip size cannot be reviewed.

The floor can be inspected when the room climate (temperature and RH) has been stable for at least 4 weeks and has returned to normal values within the limits.

This is quite natural and belongs to the hygroscopic material properties of wood and changes will quite or partly get back when the room climate conditions fulfill the requirements given on page 7, **Room climate**.

Floor heating means an additional drying of the wood flooring material which causes extra shrinking. During wintertime (heating period) the use of humidifiers are recommended.

Warranty time: The warranty period is two years from date of purchase and is limited to the first buyer of the floor. Note that a house and thus also a wood floor is acclimatized after about one year.

Other

At questions or advice for choice of surface treatment or cleaning, please contact Bjoorn Flooring: sales@bjoorn.com or call int. +46 8 678 63 25, in Sweden 020 51 50 10.

Follow Bjoorn Flooring:

Youtube: bjoorngolv

Facebook: bjoorn.se

Instagram: bjoornflooring

Houzz: bjoorn-flooring

Pinterest: bjoorn